

BANVEL[®] VM Herbicide

Pasture, Rangeland & Industrial Weed Control



Why choosing BANVEL[®] VM makes sense

BANVEL VM delivers proven control of a broad spectrum of annual, perennial and woody vegetation in pastures, rangeland and industrial non-crop areas.

BANVEL VM:

- Root and shoot uptake
- Broad-spectrum weed & brush control
- Low volatility

How BANVEL VM works

BANVEL VM is a selective broadleaf and brush herbicide powered by the low-volatility formulation of dicamba. While BANVEL VM is primarily applied as a post-emergent herbicide, it is also taken-up by weed roots.

Once in the weed, BANVEL VM moves quickly throughout the entire plant, mimicking the plants' own auxins -- naturally-occurring hormones crucial to plant development and growth. This results in uncontrolled cell division, irregular growth and finally weed death.

Because dicamba is present as diglycolamine salt, BANVEL VM is less volatile than some other dicamba formulations.

What BANVEL VM controls

BANVEL has proven to be an effective herbicide throughout Canada for over 30 years and has long been trusted as the premier dicamba formulation available.

Broadleaf weeds controlled:

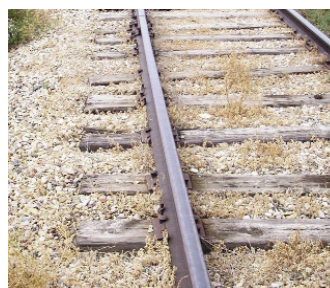
- Canada thistle
- Curled dock (top growth only)
- Diffuse knapweed
- English daisy
- Field bindweed
- Goat's beard
- Goldenrod
- Ground cherry
- Pasture sage
- Perennial sowthistle
- Poverty weed
- Sheep sorrel
- Tansy ragwort
- Thyme-leaved spurge

Woody species controlled*:

- Alder
- Aspen poplar
- Cherry
- Prickly rose
- Western snowberry
- Wild rose
- Wolf willow

*Must be tank-mixed with 2,4-D amine or low volatility ester. See label for rates.

Performance:



BANVEL VM @ 2 L/ha (SK, 2007)



Untreated Control

Photo source: BASF Canada (2007).

Environment, health and safety

BANVEL VM: General Information

Active Ingredients: Dicamba

Formulation: Solution

Packaging: 2 x 10 L

Combustibility: Non-combustible

Regulation: Not regulated by TDG or WHMIS

Toxicity: Low (Signal Word: Caution)

User Toxicology

BANVEL VM is a safe product for both users and the general public.

- Human Risk Potential: Negligible
- Oral LD₅₀ 3512 mg/kg
- Dermal LC₅₀ >2000 mg/kg
- Skin Irritant: Mildly irritating
- Eye Irritant: Moderate but temporarily irritating
- Does not bioaccumulate
- Carcinogenic: Non-carcinogenic
- Mutagenic: Non-mutagenic

Ecotoxicity

From an environmental perspective, BANVEL VM is a very safe product.

Birds: Practically Non-Toxic

LD₅₀ > 5632 mg/kg

Fish: Practically Non-Toxic to Slightly Toxic

LC₅₀ > 1000 mg/L

Aquatic Insects: Practically Non-Toxic to Slightly Toxic

LC₅₀ > 1000 mg/L

For more information as well as technical and sales support for BANVEL VM Herbicide, contact your local ENGAGE Agro or TrueNorth Specialty Products representative.

For copies of a BANVEL VM Herbicide label or MSDS, visit www.engageagro.com or www.truenorthspecialty.com.

Technical Support Provided by **ENGAGE AGRO**

Always read and follow label directions.

BANVEL is a registered trade-mark of BASF Canada Inc. © 2011 BASF.

Environmental Fate

Volatility: Moderate. Because dicamba is present as diglycolamine salt, BANVEL VM is less volatile than some other dicamba formulations.

Persistence: Half-life in soil: 1-4 weeks (typically 2 weeks).

Erosion: The potential for movement of dicamba on eroded soil is low.

Leaching: Dicamba can leach through sandy soils or where the water table is shallow.

Run-Off: The potential for movement of dicamba through surface run-off is high.

Buffer Zones

- Leave an adequate downwind buffer zone to sensitive plants.

Handling Precautions

- READ LABEL BEFORE USING BANVEL VM.
- Use goggles, gloves and coveralls when mixing.
- Wash thoroughly after using.
- Launder clothes separately.

First Aid

- Eye Contact: Flush with water for 15-20 minutes
- Skin Contact: Wash with soap & water
- Inhalation: Remove to fresh air
- Ingestion: drink water, seek immediate medical attention
- Call 1-800-454-2673 for 24 hour assistance.

BANVEL VM